

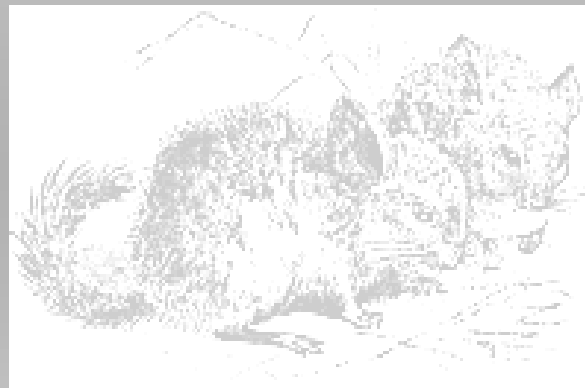
BOARD MEMBERS

- Gene Adcock—President—Region III
superiorchinchillas@yahoo.com
Advertising- Membership
- Joe Brown—Vice President—At Large
joebnok@att.net
Magazine
- Vin Somavia—Region I
vjsomavia@yahoo.com
National Events
- Bob Merritt—At Large
rvdk@cebridge.net
Internet Chairman
- Tony Andeway- Region II
tande711@iowaterlccom.net.
Research, Education, CIC Rep
- Roger Clark—At Large
rakaclark@paonia.com
Fund Raising—National Show
- Luke Fausett—At Large
lukef@ubtanet.com
Chair—Youth Development

For more information about our organization or to receive your new member packet, please contact me at the address below, or email me.

Packet includes -

- Membership Forms
- Branch Affiliation Information
- Standard Guidelines for Raising Chinchillas



Empress Chinchilla Breeders Coop

Kathy Clark
43188 Cottonwood Creek Road
Crawford, CO 81415
970-921-7231

www.empresschinchilla.org
empresschinchilla@gmail.com

**Empress Chinchilla Breeders
Cooperative, Inc.**
Be Part of the Finest

EMPRESS
CHINCHILLA



Be Part of the Finest—Be Part of Empress Chinchilla—

Educating Breeders Worldwide

ABOUT OUR COOPERATIVE

Our members enjoy numerous benefits and the advantages that come with the ability to combine strength, knowledge, and buying power with other breeders the world over.

BE PART OF THE FINEST

In addition to the ability to network with and learn from other breeders, membership fee includes all of these other benefits !

- A monthly educational magazine
- A ranching standards and guidelines certification program
- The finest competitive shows worldwide
- A national show each year
- A chinchilla registry program
- Branch Meetings
- Field Days
- Claiming Shows
- Annual Educational seminars
- A place to sell your pelts

Empress Chinchilla Breeders Coop

43188 Cottonwood Creek Road
Crawford, CO 81415
970-921-7231
empresschinchilla@gmail.com

MEMBERSHIP

We offer membership at several different levels.

- Progressive Membership-

This is how you begin— membership includes ability to show at all shows. You will receive all the benefits of the organization, however without voting privilege or being able to hold a office at branch or national level. After two years you may then move up to :

- Commercial/Professional Membership
After two years of being a Progressive member, getting the sponsorship of your branch and approved by the National Board, you then will have full voting privileges, the ability to hold branch and National Office positions, and all the other benefits that we offer.

- 4/H or FFA Membership

You must be sponsored by a branch. You will have the ability to show at all shows. Plus you will receive a discount on all membership supplies. A 4/H or FFA member has no voting privileges nor receives a magazine.

- Associate Member

Must be a spouse or partner of a Commercial/Professional Member. May hold an office at branch level, receives no magazine., but still has voting privileges.

PROFESSIONAL/COMMERCIAL

\$75.00 per year

PROGRESSIVE

\$45.00 per year

ASSOCIATE

\$15.00 Per year

4/H—FFA

\$25.00 per year

Advertising rates are extra



Meet us on the Web at:

www.empresschinchilla.org